



Shoulder Restoration System™

The Shoulder Restoration System from ConMed provides comprehensive solutions for complex procedures – designed to deliver the best outcomes to surgeons, OR staff, hospitals and the patients they treat.



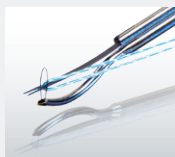
D4000™
ARTHROSCOPIC RESECTION SYSTEM



IM8000
TRUE HD 3MOS CAMERA SYSTEM



SPECTRUM® MVP™
SUTURE PASSER



EDGE™
BI-POLAR ARTHROSCOPIC RF SYSTEM



To learn more about these and other innovative products, call **800-237-0169** or visit **ConMed.com**.



Advancing the Future of Shoulder Arthroscopy

At ConMed, we believe every product we create should be an answer, a solution to a challenge that our customers face. That's why for over 50 years, we've partnered directly with surgeons to develop a complete portfolio of the most forward-thinking, high-performance products available today in shoulder arthroscopy.

Whether it's innovative anchors that provide better placement options and less bone removal, allograft extracellular matrices that can improve healing rates^{1,2} or visualization technology that lets you see like never before – ConMed's Shoulder Restoration System is the comprehensive solution you need to help you achieve the best patient outcomes.

With surgeons like you, we are:

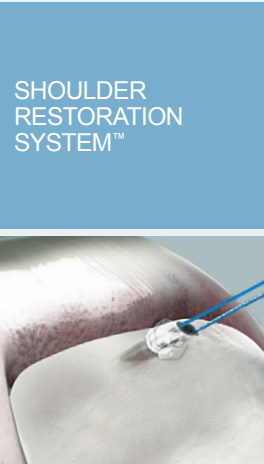
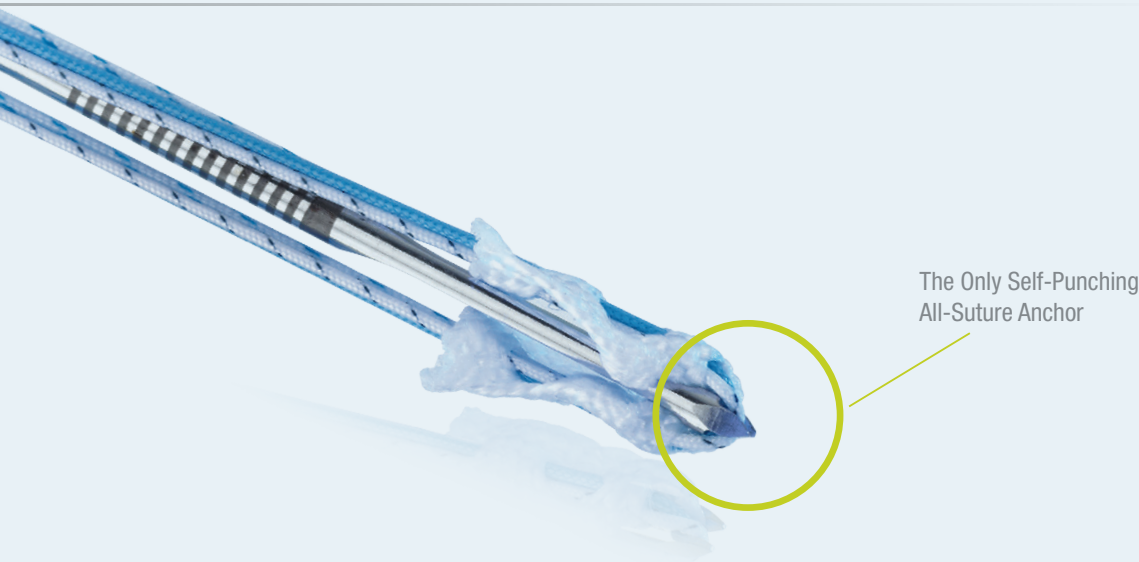
Advancing the Future of Minimally Invasive and Orthopaedic Surgery. Together.



Table of Contents

- Rotator Cuff Repair..... 4-7
- Instability Repair8-10
- Suture Passing 11-12
- Arthroscopic Cannulas13
- Arthroscopic Manual Instruments.....14
- Visualization15
- Resection 16-17
- Ablation.....18
- Fluid Management.....19

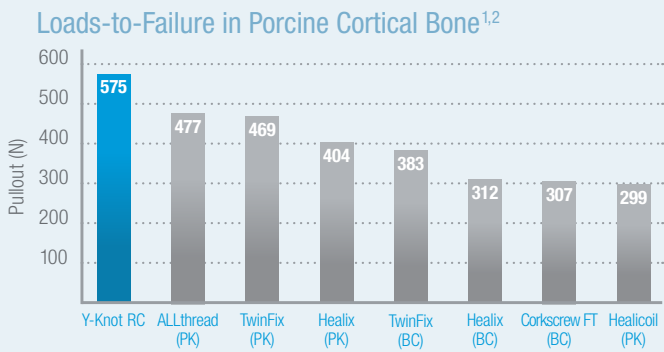
SHOULDER
RESTORATION
SYSTEM™



Y-Knot® RC
All-Suture Anchors Feature
360° Formfit Fixation™

NEW Y-Knot® RC
Self-Punching All-Suture Anchor System

With strong fixation, less bone removal and a simple, self-punching technique, the Y-Knot® RC helps overcome the trade-offs of other rotator cuff fixation methods. Currently the only self-punching all-suture anchor available, Y-Knot RC anchors can help streamline procedures with a fast, efficient technique that eliminates the need to create and find a pilot hole. In addition to requiring less bone removal than larger traditional anchors, the small 2.8mm footprint provides placement and fixation advantages when bone real estate is limited, especially during revisions.



In addition to the preferable 2.8mm footprint, these anchors deploy to 5.0mm under the cortex for firm fixation even in soft bone.

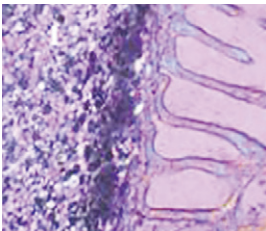
Y-Knot® RC with two strands of #2 Hi-Fi®	YRC02
Y-Knot RC with three strands of #2 Hi-Fi	YRC03

¹Data on File. Y-Knot RC (triple-loaded) and Arthrex Corkscrew® FT (double-loaded) tested in porcine cortical bone. ²Barber, FA, et al. Arthroscopy. 2013.

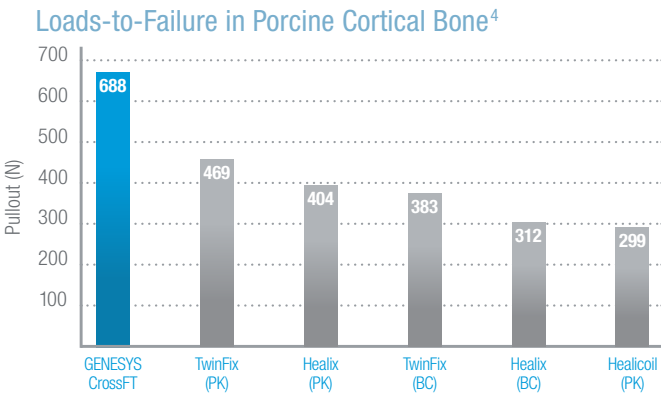


CrossFT™ and GENESYS™ CrossFT™ Suture Anchors

The CrossFT™ (PEEK) and GENESYS™ CrossFT (biocomposite) fully threaded suture anchors provide the combination of strength and reliability seldom found in other anchors. The cortical and cancellous threads provide industry-leading pullout strength. The anchor cannulation may channel growth factors to the healing tendon. The GENESYS CrossFT anchor is composed of innovative GENESYS biocomposite material with proven bone in-growth³ and exceptional pullout strength⁴.

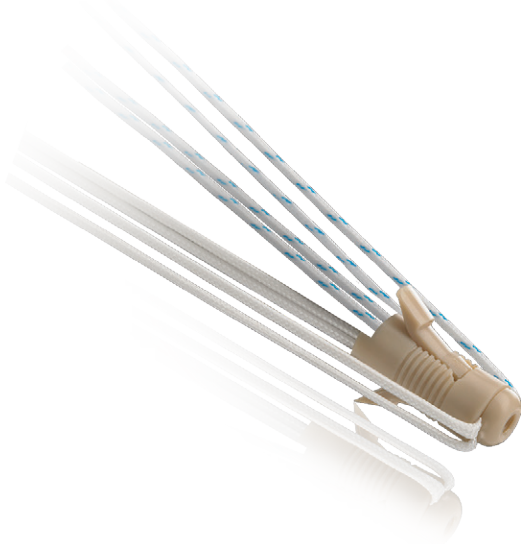


GENESYS™ IMPLANT
SHOWING BONE
IN-GROWTH



	Double-Loaded		Triple-Loaded	
	w/o Needles	w/ Needles	w/o Needles	w/ Needles
4.5mm CrossFT™ Suture Anchor	CFP-4502	CFP-4502N	CFP-4503	CFP-4503N
5.5mm CrossFT Suture Anchor	CFP-5502	CFP-5502N	CFP-5503	CFP-5503N
6.5mm CrossFT Suture Anchor	CFP-6502	CFP-6502N	CFP-6503	CFP-6503N
4.5mm GENESYS™ CrossFT Suture Anchor	CFBC-4502	CFBC-4502N	CFBC-4503	CFBC-4503N
5.5mm GENESYS CrossFT Suture Anchor	CFBC-5502	CFBC-5502N	CFBC-5503	CFBC-5503N
6.5mm GENESYS CrossFT Suture Anchor	CFBC-6502	CFBC-6502N	CFBC-6503	CFBC-6503N

³Daculsi et al. Biomaterials 2011. ⁴Barber et al. Arthroscopy 2013.



PopLok® Knotless Suture Anchors

The all-PEEK PopLok® Knotless Suture Anchors provide reliable and reproducible tendon-to-bone fixation for rotator cuff repair. The unique suture locking mechanism traps suture within the anchor, resulting in dependable fixation. The PopLok Knotless Suture Anchor also has the ability to tension the suture after the anchor is seated in the pilot hole. When the anchor is “popped,” the wings are deployed subcortically to provide secure fixation in the bone.

3.5mm PopLok®	CKP-3500
4.5mm PopLok	CKP-4500
3.5mm PopLok Punch	PKL-35M
4.5mm PopLok Punch	PKL-45M

Super Revo® FT and ThRevo® FT Suture Anchors

The Super Revo® FT and ThRevo® FT anchors are easy-to-use, fully-threaded, self-punching, titanium suture anchors. The Super Revo and ThRevo are the non-fully-threaded versions.

	Without Needles	With Needles
Super Revo® FT Suture Anchor w/two #2 Hi-Fi® Sutures	CF6140H	CF6140HN
ThRevo® FT Suture Anchor w/three #2 Hi-Fi Sutures	CF6160H	CF6160HN
Super Revo Suture Anchor w/two #2 Hi-Fi Sutures	C6140H	
ThRevo Suture Anchor w/three #2 Hi-Fi Sutures	C6160H	





Alloparch HD[®]

Acellular Human Dermis

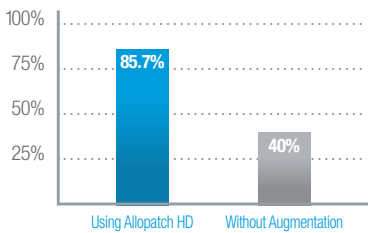
Recent peer-reviewed research has shown that augmenting a repair with an allograft scaffold can help improve success rates¹. In fact, repairs using Human Acellular Dermal Matrices have shown success rates of 85.7% in massive rotator cuff repairs^{1,2}.

Through a partnership with MTF, ConMed provides surgeons with a proven, high-quality extracellular matrix (ECM) scaffold that delivers distinct advantages over other available options.

Alloparch HD[®] is minimally processed which better preserves and maintains the graft's natural biomechanical and biochemical properties. Unlike other ECMs that need to be hydrated for 60 minutes or more before being used, – delaying procedure completion and prolonging OR time – Alloparch HD requires no refrigeration or hydration and is ready to use off the shelf almost immediately.



Success Rate of Large Revision Rotator Cuff Tears
When Using Allograft Scaffold for Augmentation^{1,2}



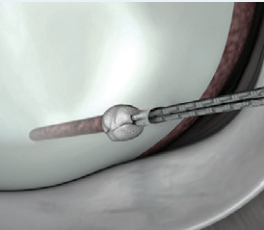
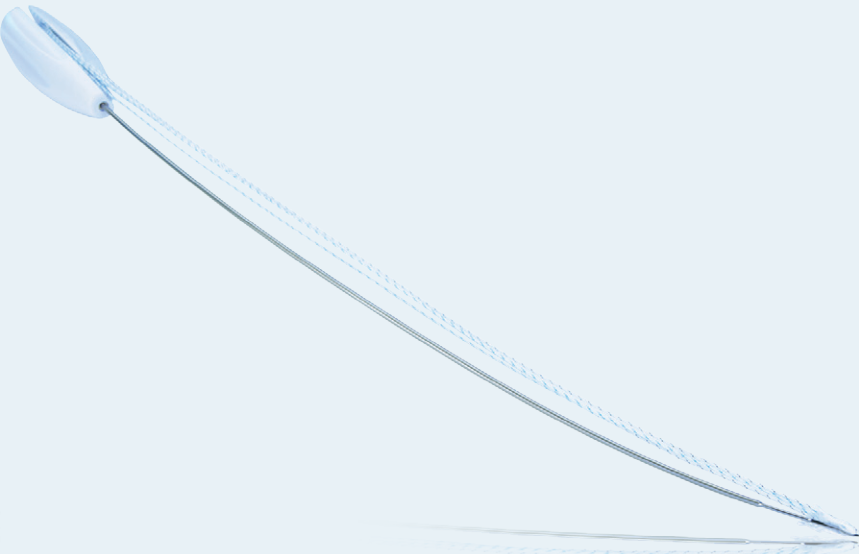
MTF has one of the most stringent donor selection standards of any tissue bank in the world, helping ensure tissue of the highest quality.

In partnership with
MTF Musculoskeletal
Transplant
Foundation

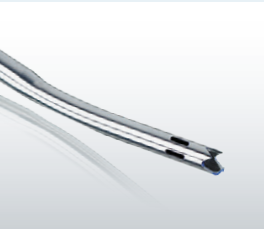
	Hydrated	Dehydrated
5cm x 5cm, Thick (0.8mm - 1.7mm)	471505	371505
5cm x 5cm, Ultra Thick (1.8mm - 3.9mm)	472505	

*For a complete listing of Alloparch HD contact your ConMed sales representative.
Alloparch HD is not available in all countries..*

¹Barber et al. Arthroscopy, 2012. ²Agrawal V. Int J Shoulder Surg, 2012.



1.3MM SINGLE-LOADED

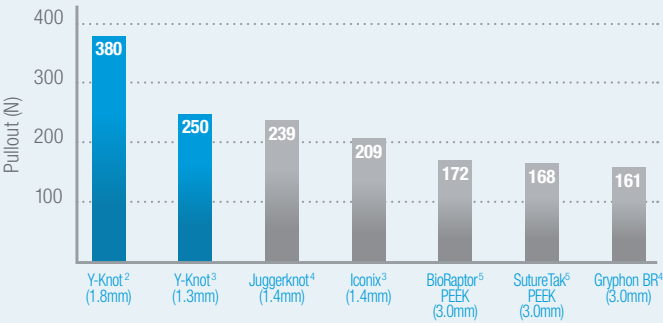


CURVED DRILL GUIDE

NEW Y-Knot® Flex
All-Suture Anchor System

With the market’s smallest double-loaded anchor¹ and innovative instrumentation, the Y-Knot Flex System was designed to help achieve optimal anchor placement. The anchors provide 55% greater fixation strength than conventional 3.0mm press fit anchors while removing up to 80% less bone¹. The curved and percutaneous delivery systems enable delivery around a curve and perpendicular placement for posterior SLAP and inferior Bankart repairs.

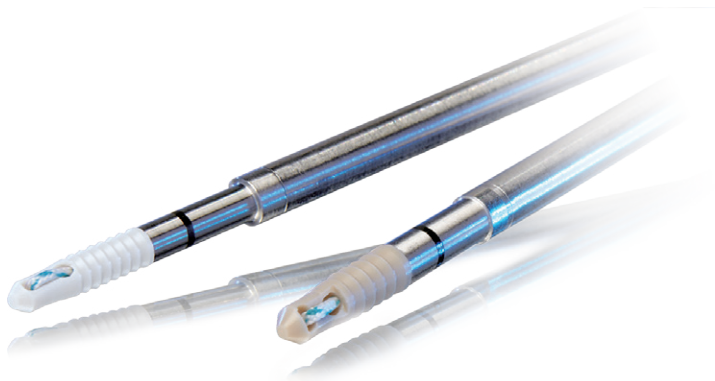
Loads-to-Failure in Porcine Cortical Bone
Commonly Used Labral Repair Anchors¹



Y-Knot® Flex 1.3mm with one strand of #2 Hi-Fi®	Y1301
Y-Knot Flex 1.8mm with two strands of #2 Hi-Fi	Y1802

Curved, percutaneous, fishmouth and crown guide options are available.

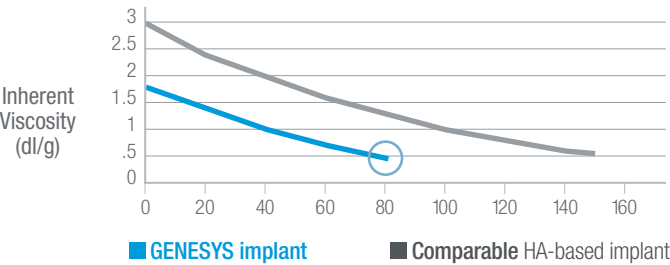
¹Data on File. ²Data on file. Double-loaded anchor; other anchors in chart are single-loaded. ³Barber et al. Arthroscopy, 2009. ⁴Barber et al. Arthroscopy, 2011. ⁵Barber et al. Arthroscopy, 2013.



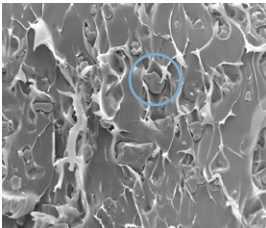
PressFT™ and GENESYS™ PressFT Suture Anchors

For surgeons who need strong fixation in a small footprint, the PressFT™ Suture Anchors combine small size with exceptional strength. The implant comes single or double-loaded with Hi-Fi® suture and is available in PEEK or GENESYS™ biocomposite material.

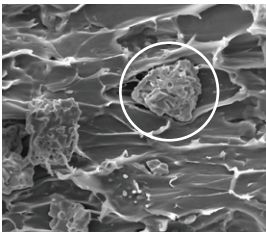
Optimal Absorption Characteristics



When the inherent viscosity of an implant is in the 0.6 to 0.8 dl/g range, a critical degradation of mechanical properties occurs. GENESYS biocomposite breaks down approximately twice as fast as some HA-based biocomposites while maintaining strength throughout the healing period.⁶



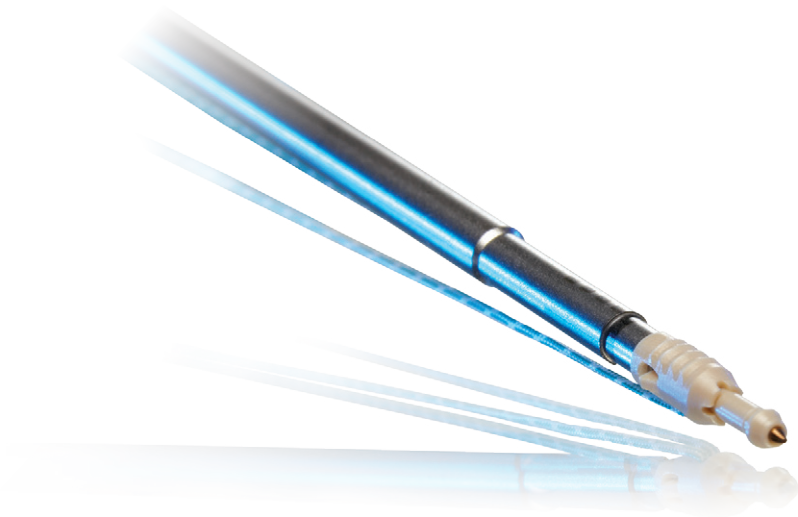
GENESYS (microTCP material)
magnification 500x



STANDARD (β-TCP material)
magnification 500x

PressFT™ 2.1mm Anchor w/one strand of #2 Hi-Fi® - PEEK	NP211
PressFT 2.6mm Anchor w/one strand of #2 Hi-Fi - PEEK	NP261
GENESYS™ PressFT 2.1mm Anchor w/one strand of #2 Hi-Fi	NB211
GENESYS PressFT 2.6mm Anchor w/one strand of #2 Hi-Fi	NB261

⁶Barber et al. Osteoarticular and Dental Tissue Engineering Research Center, 2011.



SHOULDER
RESTORATION
SYSTEM™

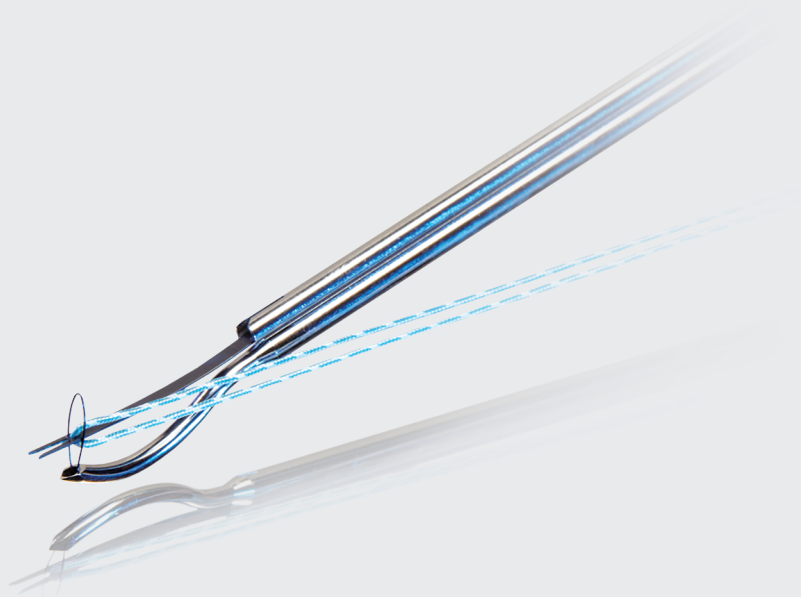


POPLOK® HANDLE

PopLok® Knotless Suture Anchors

The all-PEEK PopLok® Knotless Suture Anchors provide strength and reliability for instability repairs. The sutures of PopLok anchors are locked within the anchor construct itself - meaning that fixation is less dependent upon bone quality for more consistent and reliable implantation. The anchor's innovative design allows surgeons to adjust suture tension once the anchor is seated in the pilot hole for maximum flexibility.

2.8mm PopLok® w/one #2 Hi-Fi® Suture	GKP-2801
3.3mm PopLok w/one #2 Hi-Fi Suture	GKP-3301
PopLok 2.8/3.3mm Drill Bit	BKL-00M
PopLok Guide	BGU-00M
PopLok Obturator	BTR-00M



Spectrum® and Spectrum MVP™ Suture Passers

The Spectrum® family of suture passing instruments continues to set the bar for precise, efficient, and versatile suture passing. The 1.8mm low profile suture hook of the Spectrum MVP™ device (pictured above) passes and retrieves suture without the need for a separate suture shuttling step, whereas the Spectrum II system offers a broad array of suture hook configurations, covering a wide variety of suture passing needs.

Spectrum® MVP™ - Medium Crescent Hook - Disposable (3/box)	C6400
Spectrum MVP - 45° Right Hook - Disposable (3/box)	C6410
Spectrum MVP - 45° Left Hook - Disposable (3/box)	C6420

Additional Spectrum Suture Passer options are available.



SPECTRUM® MVP™



SPECTRUM® II HOOKS



CONCEPT® JAWS



Concept® Suture Passer

The Concept® Suture Passer is the latest innovation in suture passing for rotator cuff repair. The Concept Suture Passer provides simple, intuitive operation and constant surgeon control. The active window captures and retrieves suture for a simple one-handed pass. It fits down a 5.5mm cannula and is designed to be used with #2 Hi-Fi® suture.

Concept® Suture Passer
Concept Suture Passer Needle

SMI-00M
SMI-00D



Cannulas

ConMed offers a full array of disposable cannulas to help complete arthroscopic procedures more efficiently and effectively. The Dry-Doc[®] cannulas incorporate a unique accordion design for easy insertion and removal from the portal. The Hex Flex[®] cannulas have distal threads and use a semi-flexible material. The Universal cannulas, Clear Flexible cannulas, and Disposable cannulas offer many other benefits, depending on surgeon preference.

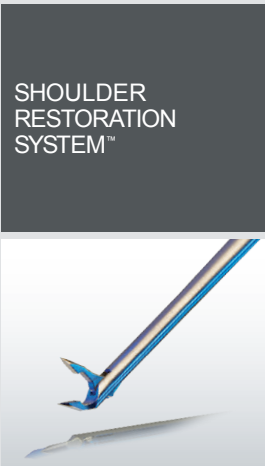
Dry-Doc [®] 7x85mm	C7360
Hex Flex [®] 7x85mm	C7465
Universal 5.5x70mm	9718
Clear Flexible (threaded) 6.5x73mm	C7312
Disposable (threaded) 6x50mm	C7322

Additional cannula options are available.



HEX FLEX[®] CANNULAS





RAVEN™ SUTURE
RETRIEVER, 35° UP



Manual Instruments

ConMed has set the standard for arthroscopic instrumentation with a reputation for precise and dependable manual instruments. From forceps and graspers to punches and probes, all the instruments in ConMed's extensive portfolio are available in a wide range of diameters and lengths for use in a variety of arthroscopic procedures

Katana High-Strength Suture Cutter	GU1009
Liberator™ Knife	25.50014
Rasp Liberator Knife II	25.50016
Grasping Forceps, 3.4mm dia., Straight w/Ratchet	11.1001
Suture Retrieval Forceps, 3.4mm dia.	16.1018
Raven™ Suture Retriever, Straight	GU1004
Raven Suture Retriever, 35° Up	GU1008
Knot Pusher	C6112
Crochet Hook	C6105
Arthroscopic Probe	21.1001
Switching Stick	2220

A complete listing of manual instruments is available.



NEW IM8000 & LS8000
True HD 3MOS Camera System
and Direct LED Light Source

High-definition, CMOS camera chip technology is the latest on the market with enhanced image processing that enables surgeons to more accurately view bone and soft tissue characteristics. This allows for quick identification of anatomical structures – because when surgeons can see clearly, they can deliver the best possible care for their patients.

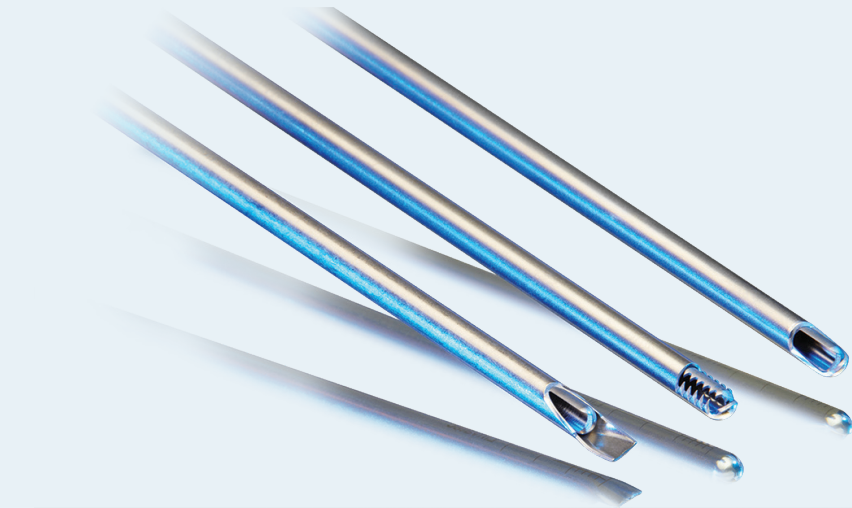
Direct LED Light Source optimizes the image that the surgeon sees on the monitor. It helps to produce a clear view of the surgical site as well as a natural color spectrum by achieving consistent light output throughout its lifetime.

True HD 3MOS Camera Control Unit	IM8000
Autoclavable True HD 3MOS Camera Head, “Eyecup”	IM8120
Autoclavable True HD 3MOS Camera Head, “Cartidge”	M8121
Direct LED Light Source	LS8000
VP100X Camera System Tray Series (RADEL)	VP1003, VP1005 VP1006, VP1007
2DHD FULL HD LCD Medical Monitors (26” and 32”)	VP4726, VP4732
HD Image Management System	DRSHD1080P
Video Cart	VP8500

A complete listing of HD scopes is available.



**SHOULDER
RESTORATION
SYSTEM™**



ERGO™ HANDPIECE

Blades & Burs

ConMed offers a variety of sharp and efficient blades and burs designed specifically for shoulder debridement applications. The Lightning® bur's fully-fluted design is ideal for procedures where both soft tissue and bone removal are desired, such as subacromial decompression. The Liberator Plus® blade provides for the release and debridement of the labrum with a single instrument.

Straight Blades

4.2mm Sterling® Great White®	9299A
4.2mm Sterling Ultracut®	C9405A

Pre-Bent and Bendable Blades

4.2mm Merlin® Great White, 15° Pre-Bent Bendable	C9299P
4.2mm Ultracut, 15° Pre-Bent	42ULT-ZZ-MT

Burs

4.0mm Oval Bur	H9101
5.5mm Spherical Bur	H9112
4.5mm Lightning Bur	H9133

Additional Blade and Bur options are available.

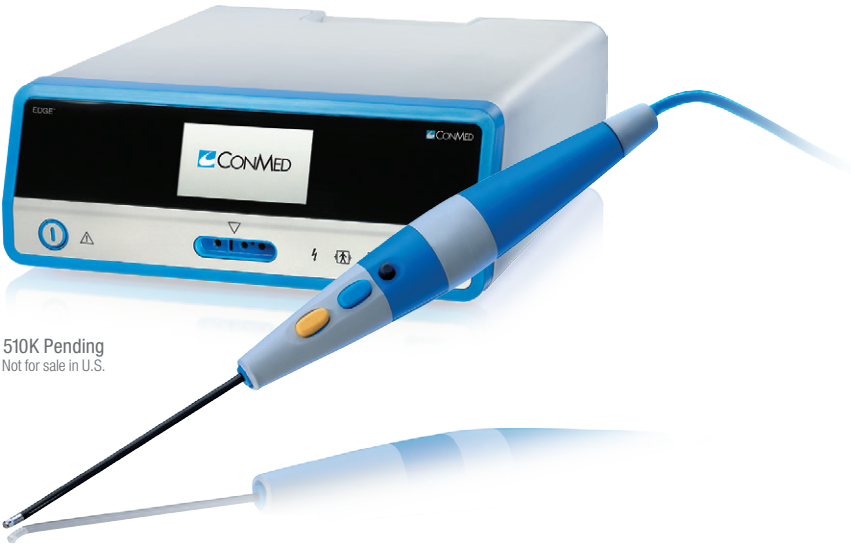


NEW D4000™
Arthroscopic Resection System

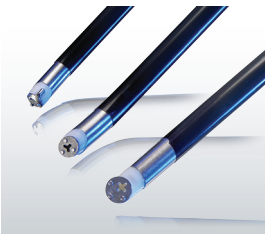
The D4000™ powered instrument console drives powered instruments and accessories used in the cutting of soft tissue and bone. The consoles provide two handpiece drive ports that are used with a variety of handpieces. Handpiece functionality can be controlled directly by the handpiece, and/or by a corded footswitch or wireless footswitch.

SHOULDER
RESTORATION
SYSTEM™

D4000™ Arthro Power Console (U.S. Only)	D4000
D4000A™ Arthro Power Console	D4000A
24K® Interface Cable	D4024
Ergo™ 2-Button Handpiece	D4240
Ergo No-Button Handpiece	D4200



510K Pending
Not for sale in U.S.



BI-POLAR PROBES

SHOULDER
RESTORATION
SYSTEM™

NEW Edge™
Bi-Polar Arthroscopic RF System

The Edge™ RF System is designed for performance, simplicity and safety. In addition to having all the features surgeons want in an arthroscopic RF system, like an intuitive touchscreen interface, the ergonomic handpiece and choice of hand or foot controls make Edge the most user-friendly RF system available. To improve patient safety, the system provides real-time measurement of the joint fluid temperature and will automatically shut off if a probe comes into close contact with any metal instruments. The single piece electrode design promotes probe integrity throughout the entire procedure.

EDGE™ Arthroscopic Energy Capital Equipment

Arthroscopic Energy Generator	AES -1
Arthroscopic Energy Foot Control	ES-FC
Arthroscopic Energy Wireless Foot Control	AES-WFC

EDGE Arthroscopic Energy Bipolar Probes

Arthroscopic Energy 90o Probe with Suction	AES-90S
Arthroscopic Energy 50o Probe with Suction	AES-50S
Arthroscopic Energy 30o Probe	AES-30

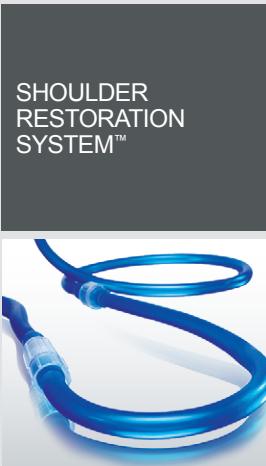


Fluid Management Systems

ConMed is the world leader in arthroscopic fluid management with its 10k® and 24k® pump consoles. The 24k pump offers inflow/outflow control capabilities, True Intra-articular Pressure Sensing (TIPS), and shaver suction control. Both pumps offer simple setup and priming with flow rates up to 2 liters per minute, and an EcoFlow® day-use tubing option that may increase efficiency in a busy OR.

24k® Pump	24k
10k® Pump	10k
Inflow Tubing	10k100
Inflow Tubing with Shaver Suction Line	10k150
Outflow Shaver Suction Line	24k100
Pressure Sensing Line	24kTIPS
EcoFlow® – Day-Use Pump Tubing	10k600
EcoFlow – Single-Use Patient Tubing	10k605

Additional tubing and accessory options are available.



ECOFLOW® TUBING

*Advancing the Future of Minimally
Invasive and Orthopaedic Surgery.*

Together.



ConMed Linvatec
Shoulder Restoration System™

525 French Road
Utica, New York 13502

Local 727-392-6464
Toll Free 800-237-0169

SRS.ConMed.com
customer_service@conmed.com



Comprised of PEEK-OPTIMA® polymer from Invivo® Biomaterial Solutions. PEEK-OPTIMA® and Invivo® are registered trademarks of Invivo Ltd. All Rights are Reserved.

In partnership with



Allopatch HD® is a registered trademark of
Musculoskeletal Transplant Foundation.